

Wissenschaftliche Gesellschaft zur
Förderung der Parapsychologie e. V.

**Parapsychologische
Beratungsstelle**

Dr.rer.nat. Dr.phil. Walter v. Lucadou
Dipl.-Psych. Franziska Wald
Dr. päd. Sarah Pohl
Dipl.-Psych. Renate v. Lucadou (VT)
Manuela v. Lucadou M.A.
Hildastraße 64, D-79102 Freiburg i. Br.
Tel.tiFax: 0761ti77202
info@parapsychologische-beratungsstelle.de
www.parapsychologische-beratungsstelle.de



Stipendiat

Dr. Dr. Walter von Lucadou

Embodiment Disorder - If Paranormal Experiences Hurt

Embodiment Disorder - If Paranormal Experiences Hurt

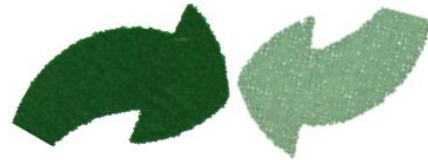
A systemic phenomenological model that assumes the movability of the Cartesian cut is proposed and elucidated by means of a single case study. The model assumes that a continuum from purely psychosomatic disorders to RSPK cases exists. The degree of externalization (locus of control) of the affected person serves as an ordering parameter for the location of the Cartesian cut. It turns out that the dynamics of embodiment disorder develops in four phases, like in the RSPK-model of the MPI. However, in contrast to the decline phase of the RSPK cases (because of the NT-axiom), CER cases lead to petrification of the complaints. A specific therapy approach was developed in the parapsychological counseling office, which is largely ideology-invariant and therefore it allows to incorporate personal belief systems (such as magical thinking) in a positive way. Persons concerned need not deny their "paranormal" experiences any more, but they can integrate them into the therapy process positively.



Organizational closure



separated



communication



organizational closure

Generalized Quantum Theory (2002)

Fundamental notions:

System

State

Observable: A, B

Complementarity: $AB \neq BA$

*Entanglement: Patterns
independent of space and
time*

Lucadou, W. v. (1972): Zum
parapsychologischen Experiment - eine
methodologische Skizze. Zeitschrift für
Parapsychologie und Grenzgebiete der
Psychologie 16, 57-62, 1974.

Weak Quantum Theory: Complementarity and Entanglement in Physics and Beyond

Harald Atmanspacher,¹ Hartmann Römer,² and Harald Walach³

Received September 13, 2001; revised November 22, 2001

The concepts of complementarity and entanglement are considered with respect to their significance in and beyond physics. A formally generalized, weak version of quantum theory, more general than ordinary quantum theory of physical systems, is outlined and tentatively applied to two examples.

KEY WORDS: complementarity; entanglement.

1. INTRODUCTION

Complementarity and entanglement are notions which have become popular through the significance they received in quantum theory. Nevertheless they were and are applied in other fields, even beyond physics, as well. There are cases in which their purely physical meaning is naturally extended, in other cases they are used in ways making the connection to physics hard, inscrutable, or even impossible.

Applying complementarity and entanglement beyond physics, one is faced with three logical possibilities.

- Within a strong reductionist approach, one would understand every kind of complementarity and entanglement as a manifestation of the

¹ Institut für Grenzgebiete der Psychologie und Psychohygiene, Wilhelmstr. 3a, D-79098 Freiburg, Germany; Max-Planck-Institut für extraterrestrische Physik, D-85740 Garching, Germany; e-mail: haa@igpp.de

² Institut für Physik, Universität Freiburg, Hermann-Herder-Str. 3, D-79104 Freiburg, Germany.

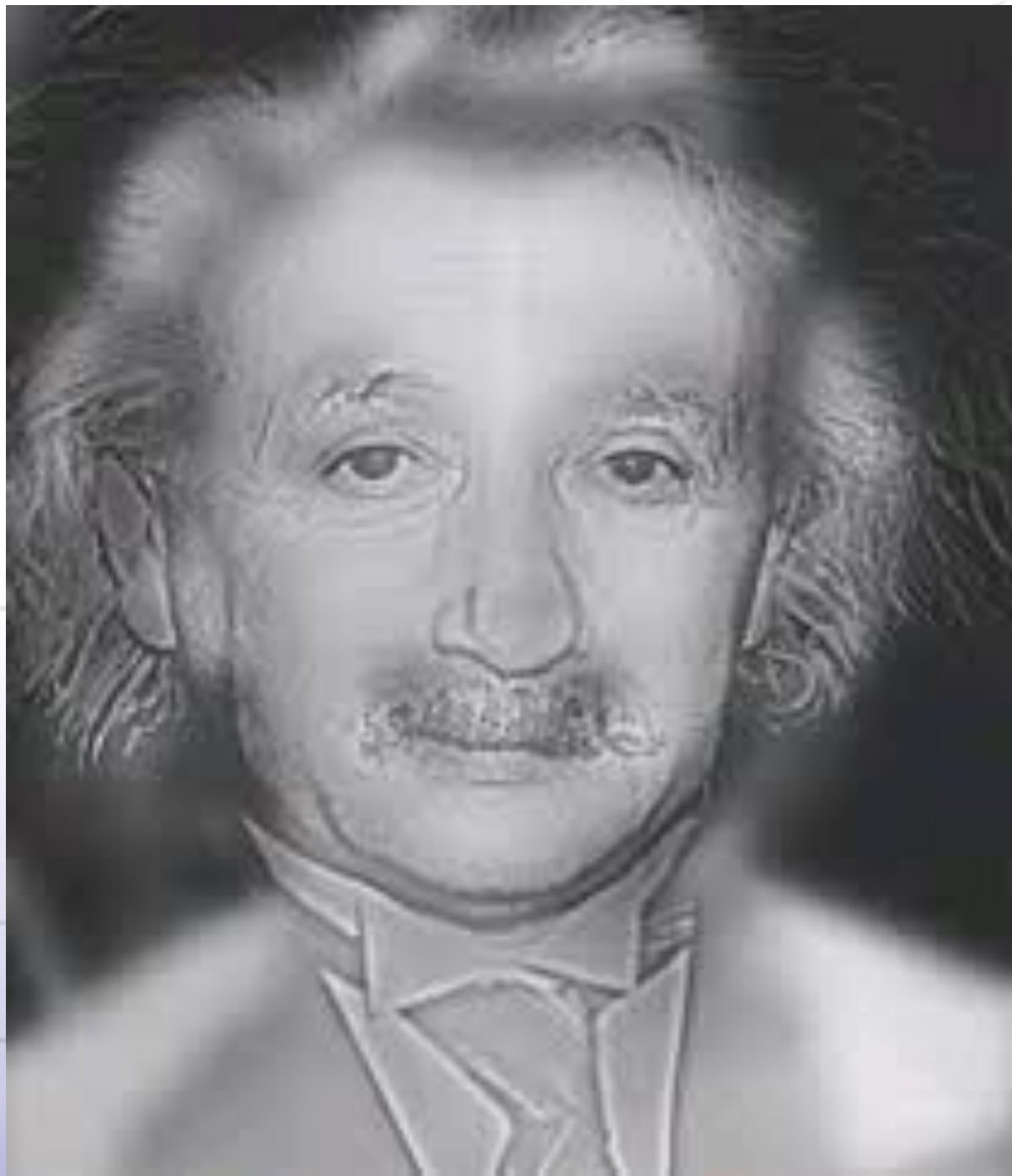
³ Institut für Umweltmedizin und Krankenhaushygiene, Universitätsklinikum Freiburg, Hugstetterstr. 55, D-79106 Freiburg, Germany.

**Local
Observable**

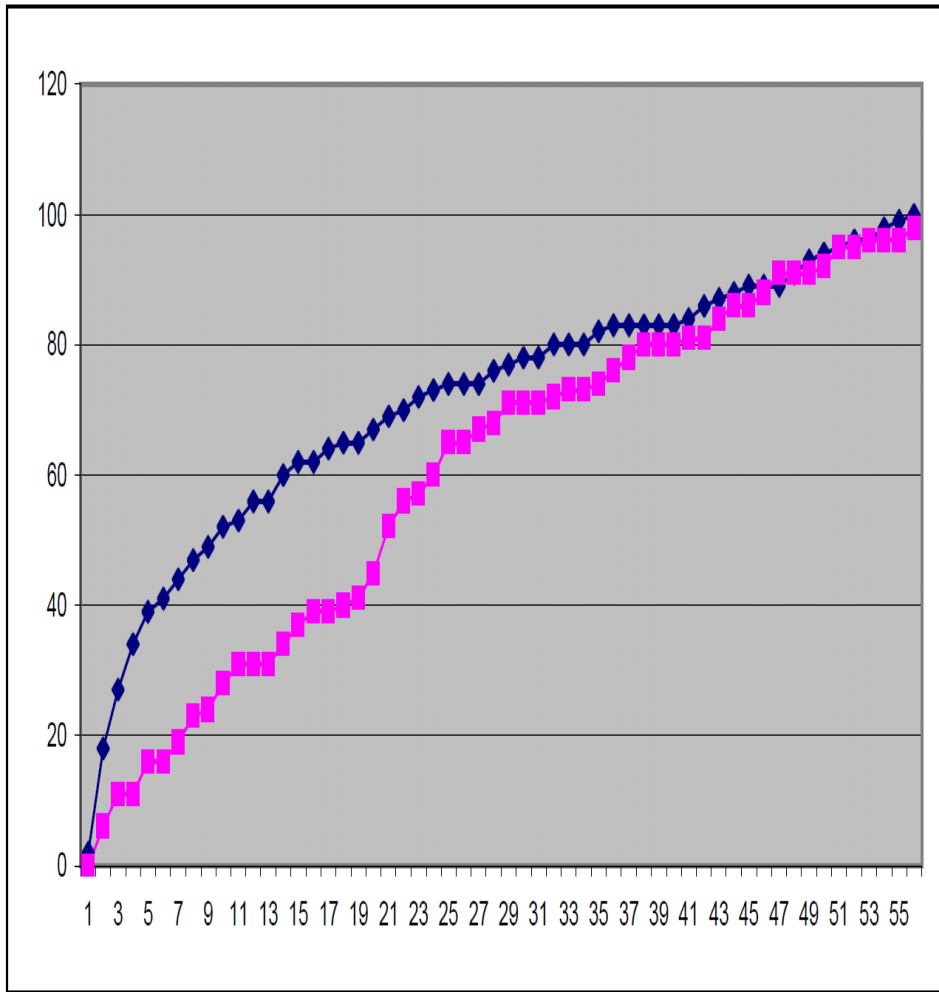
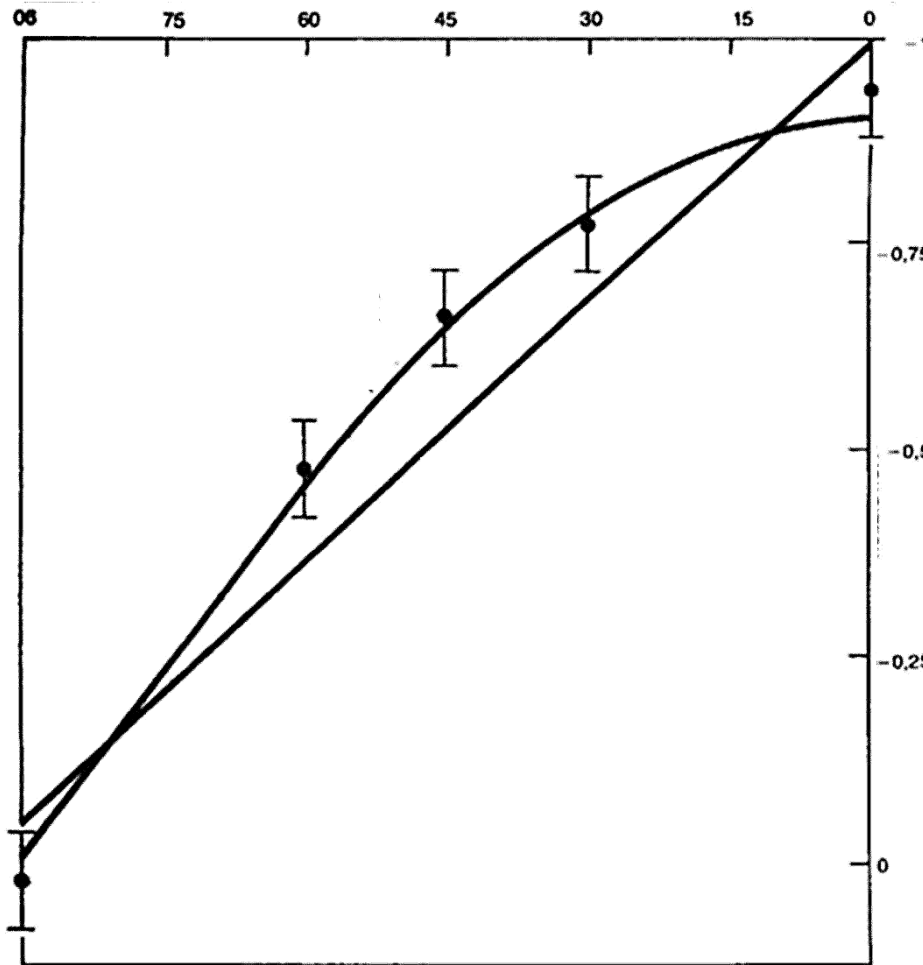


Δt

**Global
Observable**



Classical- and quantum-theoretical Correlation-function



Entanglement correlations are „stronger“ than classical ones!

Experiments to investigate entanglement-correlations

Publikation		Subjects	Psych Va	Phys Var	Ncor =V	Nsig	Ncont	Z	T	n	Dmax	α
Lucadou 1986	Markov	299	24	23	552	34	11	2,31	3,50	100	25	0,003861
Lucadou 1986	Schmidt	299	24	22	528	11	4	0,72	1,82	2016	94	0,024977
Lucadou 1991		307	16	8	128	28	13	3,13	2,56	2408	82	0,122553
Radin 1993		1	16	23	368	32	17	1,84	2,22			
Lucadou 2006	motivated	386	27	20	540	93	42	5,17	4,69	486	57	0,002499
Lucadou 2006	non-motivated	386	27	20	540	53	42	1,12	1,18	100	32	7,14E-05
Lucadou 2006	Innovatives	220	27	20	540	60	42	1,83	1,87			
Faul, Braeunig 2010		22	24	9	216	17	10	1,12	1,39			
Walach et al 2014		503	45	45	2025	278	198	4,19	3,90	100	26	0,002318
Grote 2016		20	6	5	30	6	1	2,15	2,01	30	6	0,602388
Jolij 2016		105	10	60	600	82	52	2,89	2,75			
Anna Flores 2016		213	45	45	2025	362	173	9,90	8,77	2025	271	3,55E-16
Anna Flores 2017		200	45	45	2025	317	188	6,76	6,14	2025	166	2,46E-06
Metaanalyse	Studies	12	Summe	Z/WURZEL(N)	10117	1373	793	13,59	13,19			

α = significance of the Kolmogorov-Smirnov test. $\alpha = 2/(\text{EXP}(D_{\text{max}}^2/n))$

n	Dmax	α
10117	580	7,25E-15

$T = (N_{\text{sig}} - N_{\text{cont}}) / \sqrt{((N_{\text{sig}} + N_{\text{cont}}) * (1 - (N_{\text{sig}} + N_{\text{cont}} / (2 * N_{\text{cor}}))))}$ (W. Göhler: Höhere Mathematik Formeln und Hinweise. VEB Deutscher Verlag, Leipzig 1989, 10. Aufl. p. 106)

Lucadou, W.v. (2015): The Correlation-Matrix Method (CMM) - a New Light Upon the Repeatability Problem of Parapsychology. Journal of Parapsychology Vol 79, Nr.2, 145-146

NT-Axiom

Entanglement correlations cannot be used for transmitting signals or controllable causal influences.

Lucadou, W.v., Römer, H., Walach, H. (2007): Synchronistic Phenomena as Entanglement Correlations in Generalized Quantum Theory. Journal of Consciousness Studies, 14, No.4, pp. 50-74.

Interaction of Causal and Entanglement Correlations



**Locality
Causality
Outside „Noise“**



**Non-locality
Entanglement
Within „Noise“**

Entanglement-Correlations

- They are generated by causal processes and **stabilize** them
- Occur in local subsystems if a **complementary global observable** exists
- Exist between **otherwise independent systems**, if these are themselves entangled
- Are **space-time independent** within organizationally closed systems (**OC**)
- Can not be used to transmit signals or controllable causal influences (**NT axiom**)
- Within OC, there is no need to distinguish between entanglement- and causal connections (**Pseudo-Signals**)
- Under certain conditions (internal dependency) they are **"stronger"** than **causal correlations** (Bell's inequality)
- Are "dynamic", that is, they **reorganize themselves** at every change to the system
- Can be **distinguished by "CMM"** from "causal connections"

Embodiment Disorder

Complex Environmental Reactions CER



Uexküll, J., Kriszat, G. (1983): Streifzüge durch die Umwelten von Tieren und Menschen - Ein Bilderbuch unsichtbarer Welten / Bedeutungslehre. Fischer Taschenbuch Verlag. Frankfurt am Main.

Lucadou, W.v. (2010): Complex Environmental Reactions, as a New Concept to Describe Spontaneous “Paranormal” Experiences. Axiomathes DOI 10.1007/s10516-010-9138-4 Published online 14 December 2010, Springer. Vol 21, 2, June 2011, p. 263-285.

Embodiment Disorder

Complex Environmental Reactions CER

- Hum-phenomenon
- Self-reported electromagnetic hypersensitivity
- Multiple-Chemical-Sensitivity (MCS)
- Sick-Building-Syndrome (SBS)
- Idiopathic Environmental Intolerance (IEI)
- Chronic-Fatigue-Syndrome (CFS)
- RSPK

Subjective complaint scale

- 1 Keine Beschwerden
- 2 Füße werden klamm, Prikeln in den Händen, fühle mich etwas benommen, habe leichte Sehstörungen
- 3 Klamme Füße, Beweglichkeit der Hände ist eingeschränkt, Es wird mir heiß, Benommenheit, Sehstörung, Pulsierendes Gefühl (Hände, Arme, Gesicht). Leichte Übelkeit. Leichtes inneres Zittern.
- 4 Symptome verstärkt
- 5 Klamme Füße und Hände. Es ist mir heiß. Benommenheit, Sehstörungen, Übelkeit, Schwindel
- 6 Füße pelzig, Hände steif, starke Benommenheit, starke Sehstörungen, Übelkeit, Schwindel, Beklemmungsgefühl, Herzbeschwerden (herzklopfen - kein Pochen eir z.B. nach Erschrecken, eher Zittern)
- 7 Kopfschmerz (Gefühl der Kopf zerspringt).
- 8 Füße wie abgestorben, Hände steif, Sehstörungen (kann kaum mehr Lesen), Schwindel, Übelkeit, starkes Beklemmungsgefühl, Herzbeschwerden (wie bei Fieber über 39,5)
- 9 Übelkeit mit Erbrechen

The clinical picture of electrosensitivity has been described as a new category of health problems and as a new hypothetical disease, often associated with dermatological symptoms such as pain, heat, itching, redness, papules and pustules. Also common symptoms such as back pain, fatigue, headache, nausea, vomiting, pain in the heart, increased pulse frequency, hypertension, but also unclear anxiety, aggressiveness and depression were described.

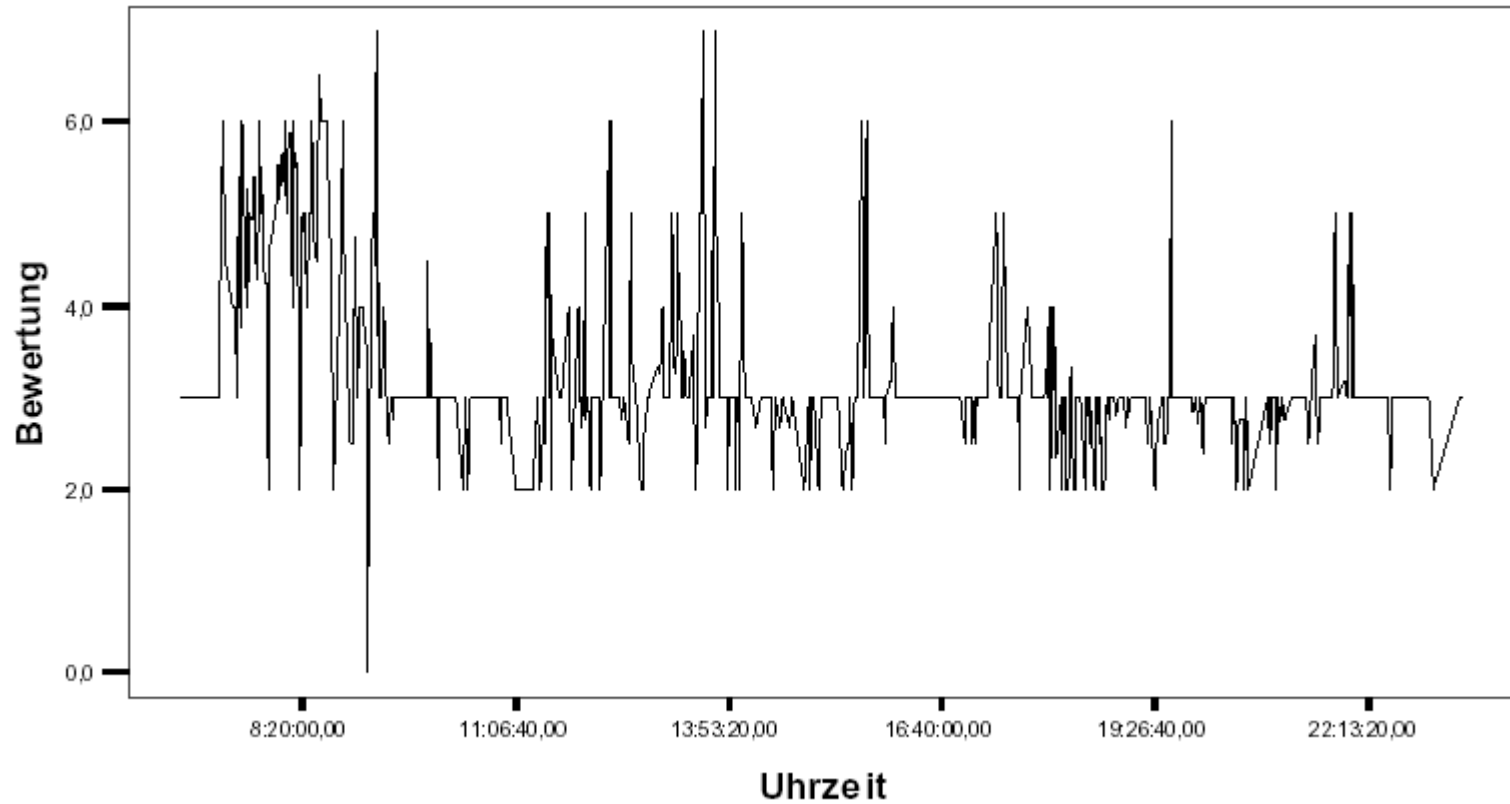
Digitaler Elektromog Analyser ME3030B

+ Kompensierter Frequenzgang von der Bahnstromfrequenz (16,67 Hertz), über die 50 Hertz von Hochspannungsleitungen und dem Haushaltsversorgungsnetz bis zu natürlichen Oberwellen z.B. von Traföhäuschen u.ä. bis 2 Kilohertz

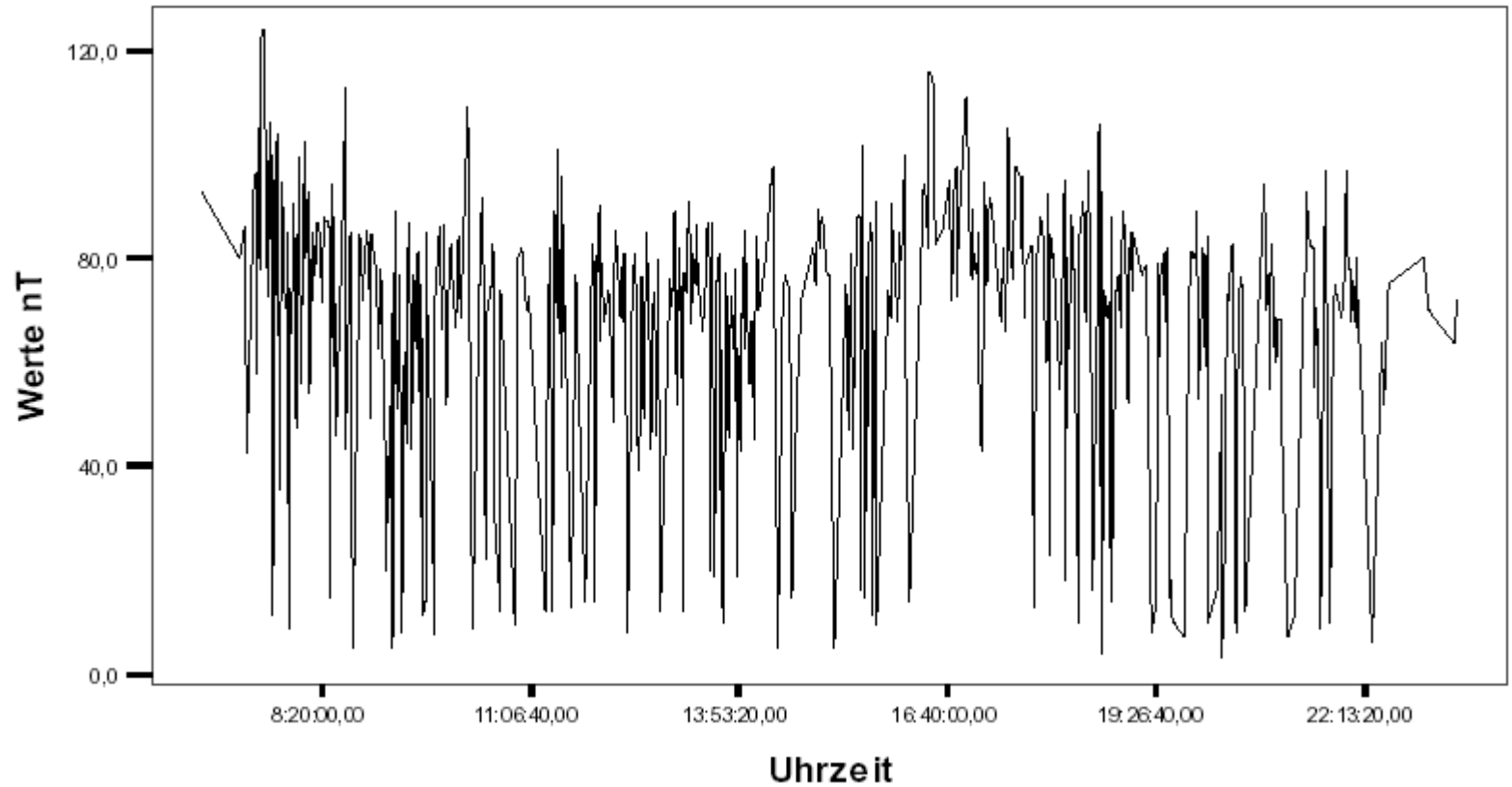
+ Einfachste Bedienung, auch technische Laien können damit eine aussagefähige Messung durchführen



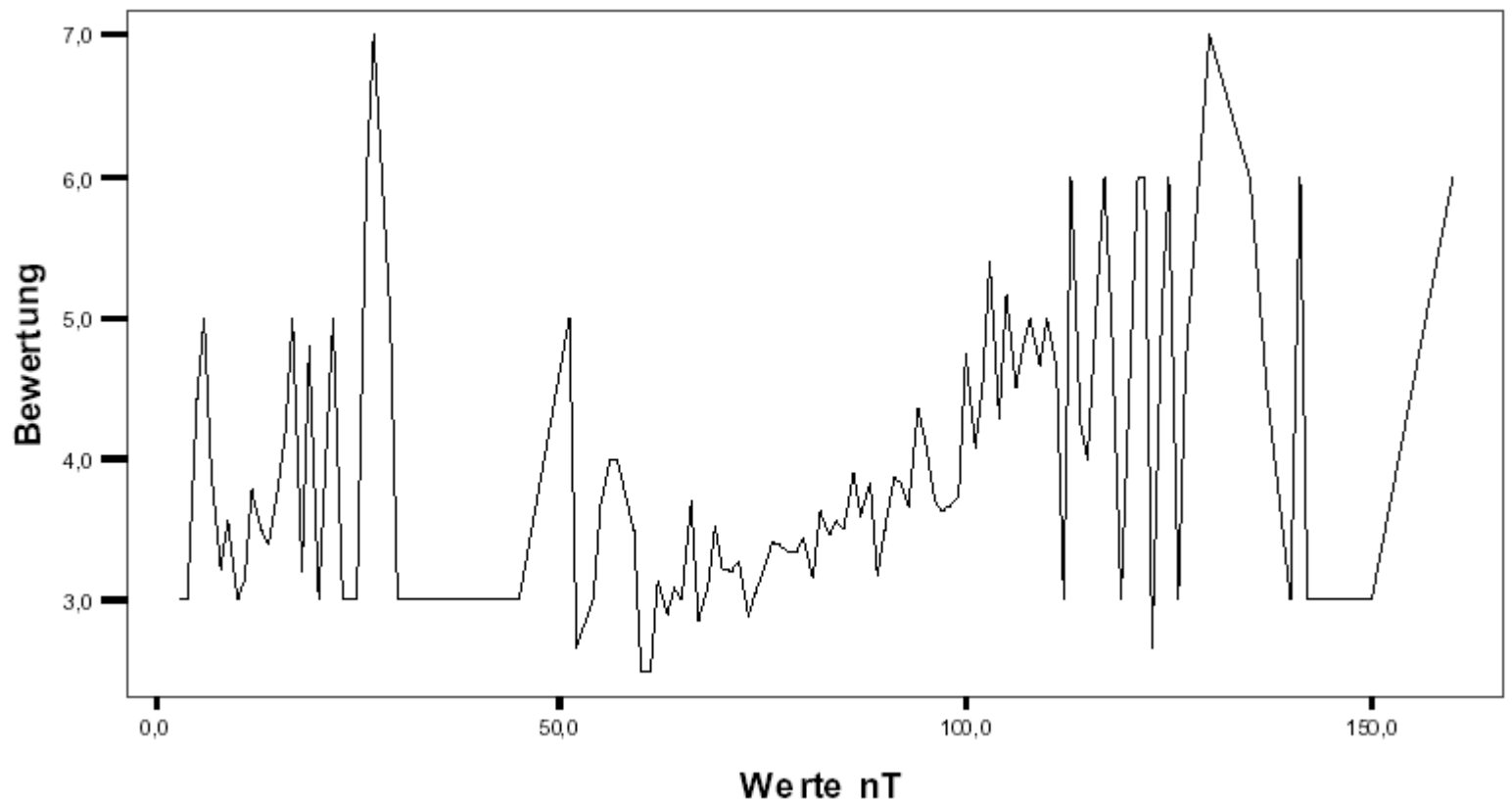
Subjective complaints



Measurement of the magnetic field (μT)



Complaints (magnetic field μT)



Homeopathization
(chaotic)

Compensation
(linear)

Decompensation
(chaotic)

Representation of the body surface

inside

outside

internal
attribution

external
attribution

psychological

physical

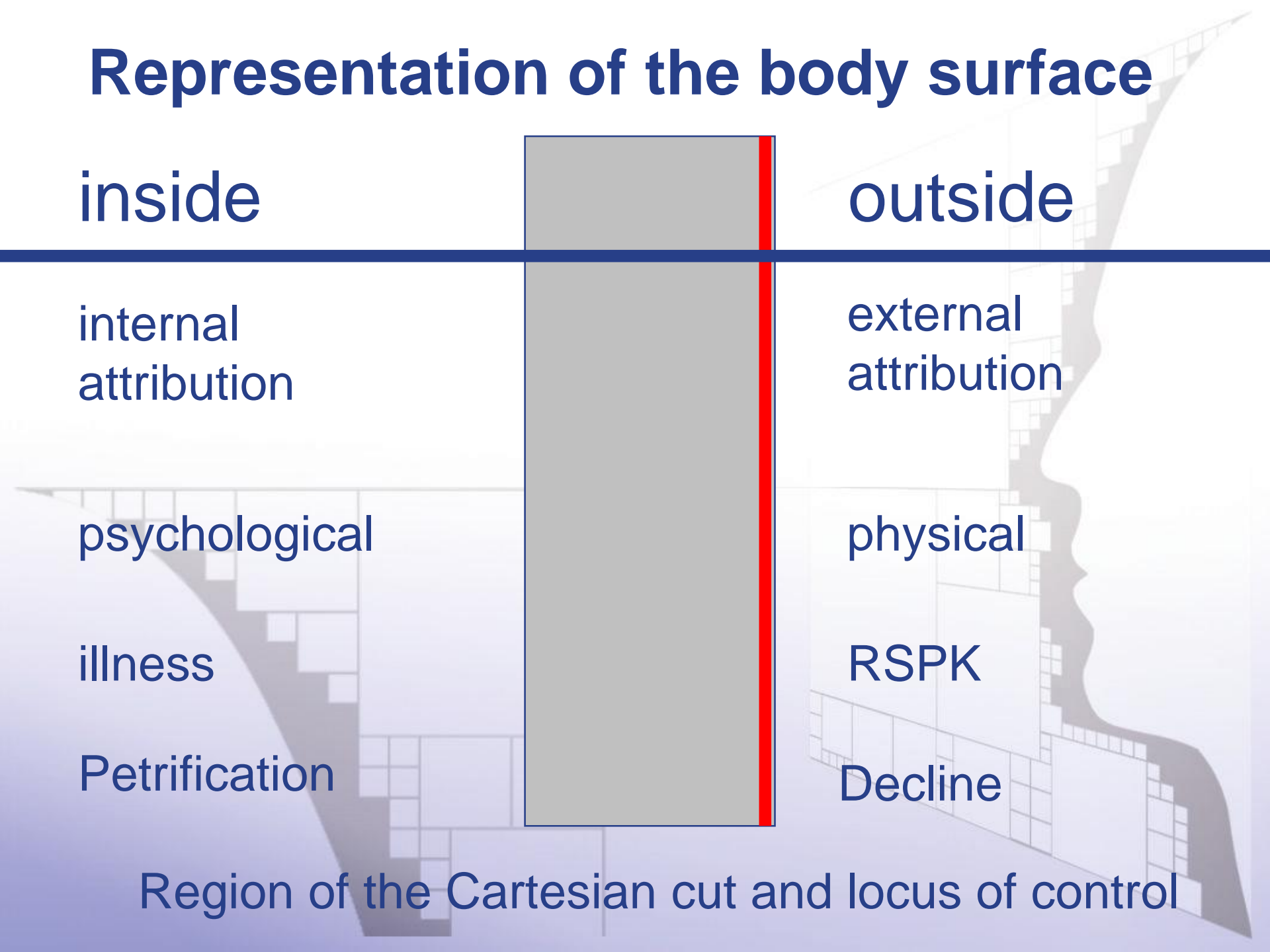
illness

RSPK

Petrification

Decline

Region of the Cartesian cut and locus of control



Macroscopic Undecidability

It cannot be decided by any procedure whether the cause of the incidents in RSPK cases is

- a) a psi-effect
- b) or a manipulation



I believe that I can make the fortunate report that the poltergeist has vanished.

My first assumption after our telephone-conversation was, that the house does not like me, and I do not like the house.... But since the phenomena did not disappear, I thought that this cannot be the problem, and beside this would have been a known problem.

When I looked through my notes, I found that all objects which were destroyed had a relation to my mother.

To explain this, I must say that my Mom and I have a very close relationship. With no other person I have ever experienced that the line was occupied, when I tried to phone her because she also tried to phone me.....

The first poltergeist phenomena happened the night after Mother's day this year, I was kicked by someone in the bed. In this moment I thought "Mom help me". In the same night a vase on the table broke in four parts. It contained flowers for her.

The photo that bounced against me, showed Mom's dog, the flowerpots that fell down were from her and also the cupboard. The marble-table which broke when the bookshelf tilted, had also a relation to my mother.

During these days we had enough time to talk to each other and my feeling that she was not well during the last months was confirmed. Last year she tried to suicide herself and she told me that she was desperate. She tried to move to us, but she saw no possibility to do this. Now, we try to find a home for her etc. ...

I am rather sure that this was the solution, and if you ask now, why I did not find it earlier, I do not know, yet it was so obvious!

I want to thank you very much, because without your help I never thought about this possibility.

Protective Elements of RSPK

- In most cases RSPK has secondary system-stabilizing components
- RSPK often has protective elements by protecting against even more serious possible consequences, despite serious rhetoric
- RSPK is solution-oriented in its symbol language
- RSPK brings dynamic changes into fixed and seemingly unsolvable situations
- RSPK challenges you to deal with certain repressed issues and problems before they manifest themselves psychosomatically

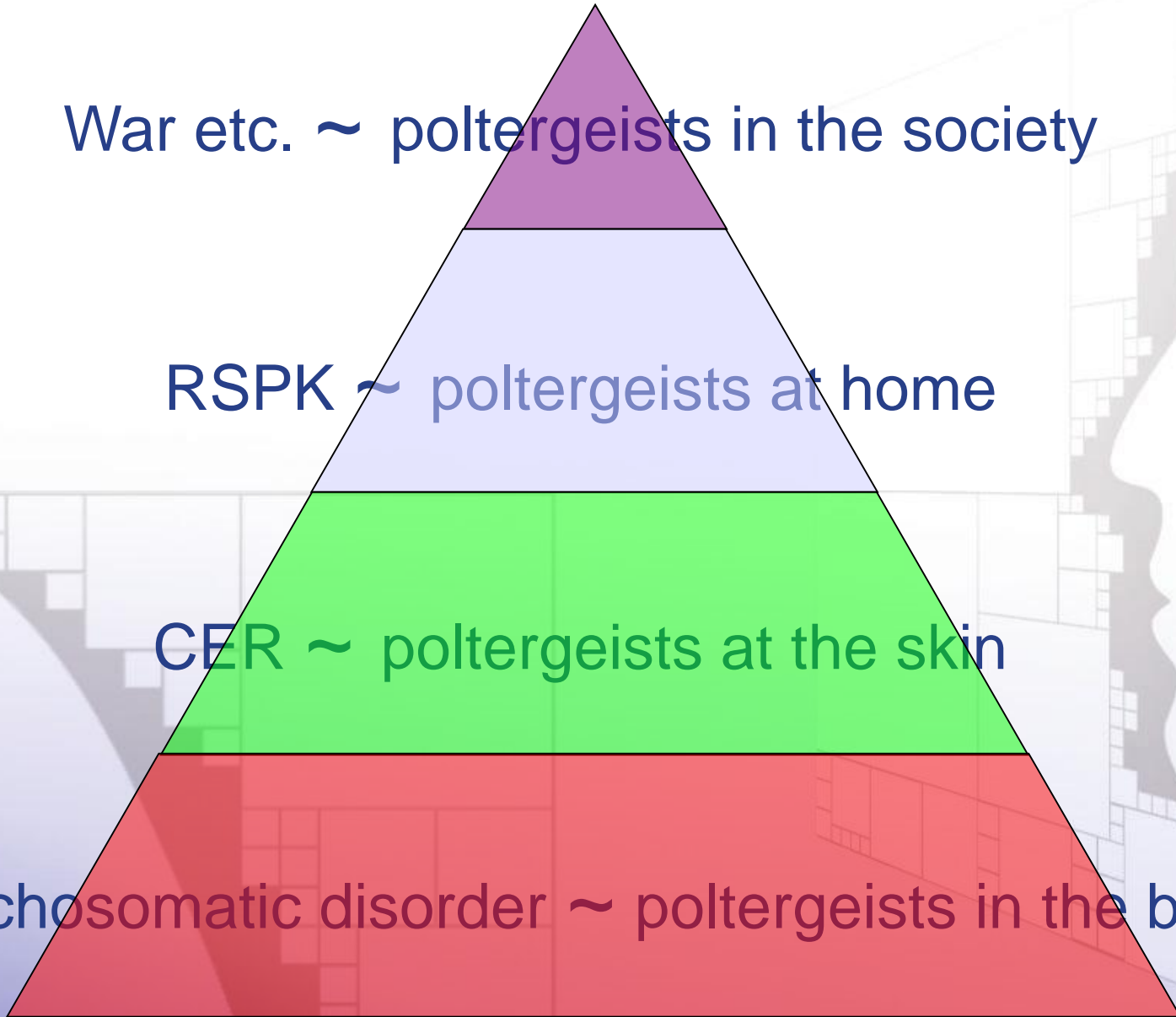
Poltergeists are anywhere

War etc. ~ poltergeists in the society

RSPK ~ poltergeists at home

CER ~ poltergeists at the skin

Psychosomatic disorder ~ poltergeists in the body



Exposed to ridiculousness

Heilerin: Bin von Hanussen besessen

Ageplagte ältere Dame: Nicht nur, dass der 60-jährigen als Folge eines Arbeitsunfalls vor Jahren ein Teil des linken Fußes amputiert wurde; nicht nur, dass sie vor fünf Jahren auf die Schummel-Post des Pforzheimers Willi Gerstel – besser bekannt als Hanussen II – hereinfiel und ein Armband, ein Pendel und zwei Bücher bestellte; nicht nur, dass er in persönlichen Briefen schmeichelt: „Ich werde mich stets mit Dir gedanklich verbinden, wenn ich spüre, dass Du meine Hilfe brauchst!“

Nun lobt der selbst ernannte Hellseher aus dem Badischen gar im Körper der Dresdnerin. Davon ist die ehemalige Verkäuferin, Kranführerin und seit zwei Jahren Geistheilern überzeugt. Bestärkt wird sie vom parapsychologischen Zentrum im fernen Freiburg. „Er steckt mir sein Geschlechtsteil in den Mund, in den Magen – deshalb brauche ich immer Tabletten“, klagt sie der PZ ihr psychosomatisches Leid: „Hanussen vibriert in mir.“

Vom Mensch zum Geist

Der ehemalige Gärtnergehilfe, Pudelzüchter, Nachtwächter und Zeitungsausstrenger (Hanussen über den jungen Willi Gerstel: „Strebsam und tüchtig“) transformierte sich vom Menschen zum Geist – und rumore

dergestalt, dass er nicht nur „den Schließmuskel der Harnröhre kaputt mache“, wovon Gerstel felsenfest überzeugt ist. Der 74-jährige aus Pforzheim – wenn er nicht gerade in seiner Wahlheimat Teneriffa weilt – zeichne

auch verantwortlich, dass sie im Juni dieses Jahres vor einer Kirche zusammengebrochen sei – und damit ein Fall für den Notarzt und das Klinikum.

„Gott warnte mich“

1994 hatte „Gott sie

noch nicht vor Hanussen gewarnt“ Sonst hätte sie noch schneller die schmeichelnden Bettel-Postkarten und die hahnebüchenen Lottozahlen-Vorhersagen in den Papierkorb geworfen, als sie dies ohnehin schon tat. Und der Herrgott hätte sie sicherlich davon abgehalten, ein Pendel zu bestellen (Prospekt: „Fra-

gen Sie, was immer Sie wollen – Ihr „Goldenes Pendel“ kann Ihnen immer antworten!“ „Nichts wird mehr vor Dir im Schleier der Unwahrheit verborgen bleiben“ oder zwei Bücher zu ordern. In denen prophezeit der weißhaarige Gerstel

„Eine Perücke“, dass im Jahre 2000 die Menschen unter der Erde leben würden.

Im Hass-Liebe verbunden

Der Mann – zum Leidwesen seiner nervierten Nachbarn in volmondnächtlichen schon mal den Erdtrabanten anheult und weder vor Fäkalien-Versand noch Telefonterror zurückschreckt – ist der PZ in innigster Hass-Liebe verbunden. Nicht erst, seit er in diesem Jahr zugunsten der Staatskasse aus seiner Privatschatulle wegen Beleidigung einen vierstelligen Betrag entziehen musste.

„Bin gerne Scharlatan“

Es trifft keinen Armen. Gerstel kassierte zumindest in der Vergangenheit geschätzte 15 000 Mark im Monat, weil er seinen „guten“ Namen für parapsychologischen „Schmick“ schnack des Instituts für Vertrieb und Management (IVM) hergab. Arm sind nur die dran, die auf den Hokusokus-Mann („Ich bin gerne Scharlatan“) hereinfallen und ihm ihr Geld in den Rachen werfen. Oder ihn im Rachen zu spüren glauben. Fragt sich nur, wer mehr zu bedauern ist.

Olaf Lorch



An PZ-Menschen, „die ich besonders liebe“, fühlte sich Hanussen erinnert, als er diese Schweine-Postkarte sah.

Possession or bewitchment?

Bewitchment



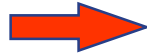
Human person

Spirit

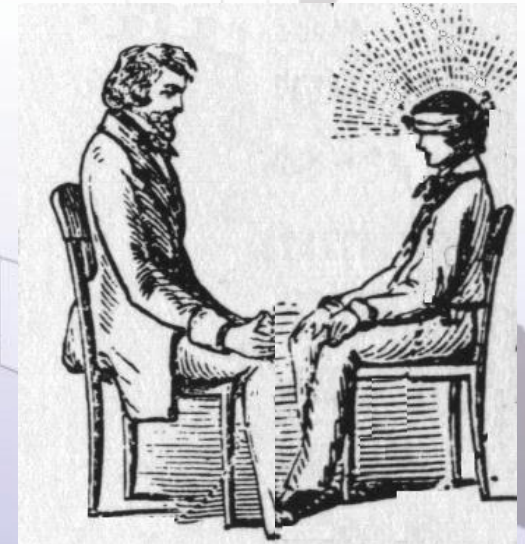


Possession

The „telepathic“ phase

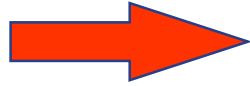


Telepathy
with the
mental „clone“



Oppositions

Healer



Patient

magical influence

Healer



Patient

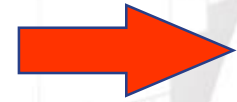
Organizational
closure

Oppositions

Local
description

In der WQT sind lokale
und globale Variablen
komplementär

Global
description



magic influence

Pseudosignal



Organizational
closure

Typical Development of Embodiment-Disorder

- **Surprise-phase:**

Assessment neutral, strong stimulus, attribution external, Novelty, Autonomy maintained

- **Displacement-phase:**

Assessment external, irritation, diagnostic and therapeutic attempts, stimulus changing

- **Decline-phase:**

Wellbeing disappears, stimulus very weak, reliability of the disorder

- **Petrification or Suppression-phase:**

External attribution absolute, Homeopathization and production of the stimulus, isolation, paranoia, autonomy and selforganization of the symptoms, reliability of the disease

Synchronistic flooding



Measures of prevention

- Understanding of connections
- Substitution
- Win back joy of life
- Win back physical sensations
- Utilize
- Teach

**Do not think
of a crocodile!**



Substitution by Something Meaningless



Body - related Behavioral Therapy

- Avoid extreme conditions
- Water applications
- Massages
-
-
-
- Training the body consciousness

The wish list

- The harassment should cease
- To lead a self-determined life again
-
-
-
-
- A visit to a cinema
- Drink a cup of coffee in peace

From dealing with potentialities In cursing syndrome



The good in the drop - the bad in the pot!



Thank you for your attention!